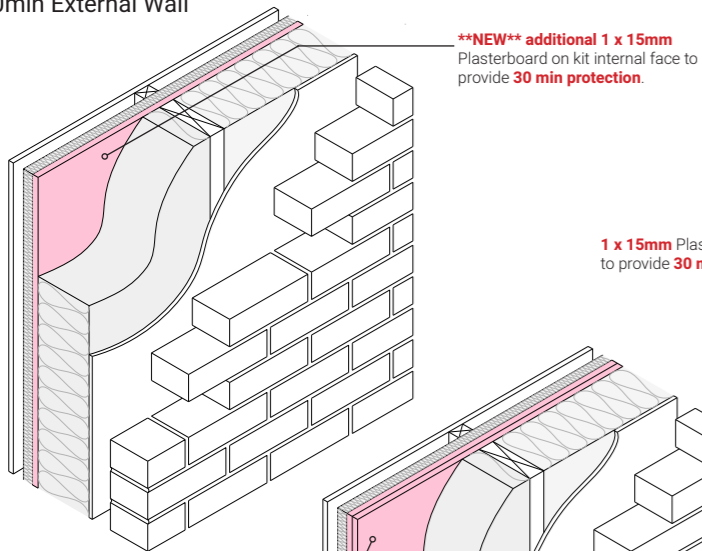


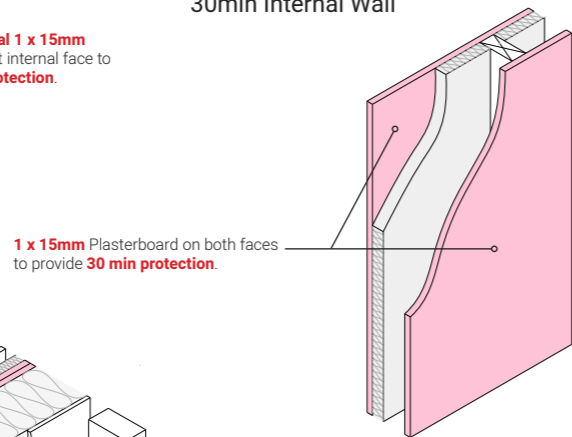
# Fire Protection of Timber Frames

February 2021

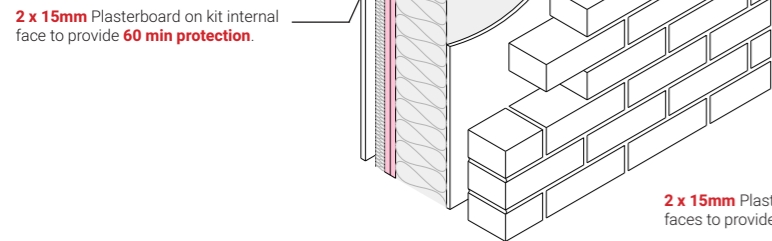
30min External Wall



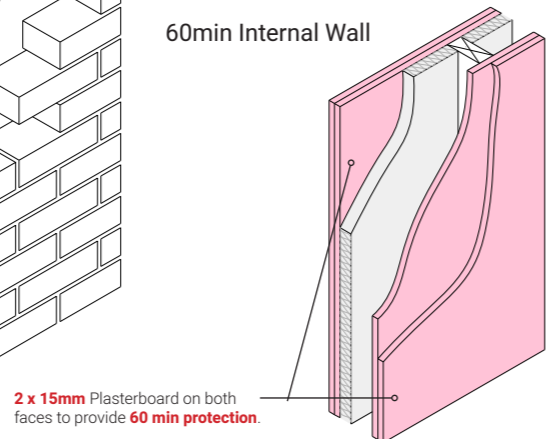
30min Internal Wall



60min External Wall



60min Internal Wall



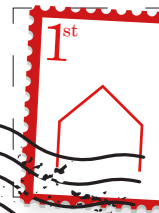
## Fire Protection of Timber Frames

Following the publication of the Structural Timber Association's (STA) recent test evidence to the latest BS EN Standards, we undertook an investigation into the appropriate methods of fire protection of timber kits.

### Key Facts

- Historically fire protection was calculated to BS 5268 -4.2 based on an assessment method and no physical testing. This standard has been withdrawn from both publication and the technical standards.
- Fire protection now requires to comply with **BS EN 1995-1-2-2004** which is based on physical test evidence.
- Test evidence is limited with the requirement for the **full build** up to be **tested** which involves input from timber frame manufacturers, insulation and plasterboard suppliers. Individual manufacturers may have specific data for their systems however to provide a design solution prior to contractor appointment, the STA provides certified solutions.
- STA test data covers 11 wall types, and have intentions to complete further testing subject to funding, however not all current wall types we use have been tested.
- Alterations are **now required** to typical wall constructions, typically the update from 12.5mm plasterboard to **15mm** to provide multiples of 30minutes and an **additional 15mm** layer to the external wall of **houses**.
- The alterations will have impact on the sound performance for compliance with noise reduction between rooms.

This postcard is intended to summarise these changes and a more comprehensive report is available upon request.



*Technical @ mastarchitects*

*51 St Vincent Crescent*

*Glasgow*

*G3 8NQ*

Should you wish to discuss individual project requirements or would like to obtain a copy of our full technical paper, please contact:

[technical@mastarchitects.co.uk](mailto:technical@mastarchitects.co.uk)

[mast@mastarchitects.co.uk](mailto:mast@mastarchitects.co.uk)  
[www.mastarchitects.co.uk](http://www.mastarchitects.co.uk)